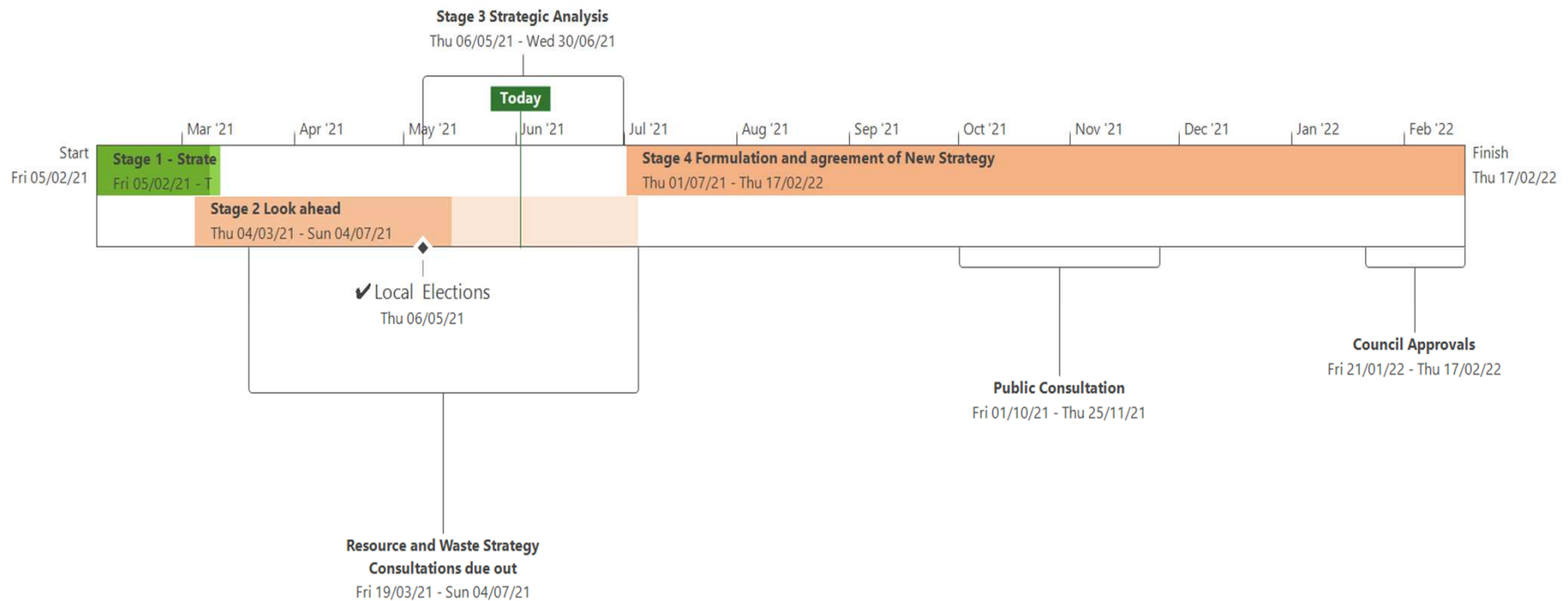


SYWP Strategy Review



SYWP Strategy review timeline



Environment Bill

The following waste streams must **be separately collected (from each other and other wastes)** for recycling or composting:

- Glass
- Metal (potentially including foil and foil trays)
- Plastic (potentially including **food/drink cartons and plastic film and flexible packaging by 2026/27**)
- Paper and card
- Food waste
- Garden waste

Two or more recyclable waste streams may be collected together where:

- it is not technically or economically practicable to collect recyclable household waste in those recyclable waste streams separately, or
- collecting recyclable household waste in those recyclable waste streams separately has no significant environmental benefit
- The wording **does not appear allow for the criteria to be used to justify not separately collecting 'Recyclable household waste'**

Food waste must be collected at least once a week

Statutory guidance and **minimum service standards**, including

- examples of technically & economically practicable and no significant environmental benefit
- completion of the written assessment



Consistency in Household and Business Recycling Collections in England

Consultation

Aims: To reach 65% recycling of municipal by 2035, improve the quality of recycling by introduction of consistent collections of household and household like waste in England.

Consultation questions on

- Consistent collection of dry recycling materials (inclusion of films and flexibles)
- Separate collection of food waste
- Separate collection of garden waste
- Exemptions from separate collection requirements
- Statutory and non-statutory guidance (TEEP)
- Non-binding performance indicators
- Recycling credits

For both household and household like services by 2026/27

Key risks/opportunities for councils

- Lack of detail on new burdens
- Lack of infrastructure to support the service
- Tight timescale for delivery where infrastructure not available
- Impact on current long term contracts

Proposed response strategy

- ❖ As with the EPR and DRS consultations, responses are fairly binary with an option to comment only if the negative option is chosen.
- ❖ At a high level the Councils will broadly agree with the intent to increase quality of recycling and adding additional materials
- ❖ The outcomes of this consultation will have an effect on the service provision and on recycling and disposal contracts
- ❖ There is uncertainty about new burdens
- ❖ **There should be a workshop with South Yorkshire Partners to inform the consultation responses**
- ❖ Councils should support their response with evidence from their current dataset where possible